



GLOBAL INSTITUTE OF ENGINEERING & TECHNOLOGY

(Approved by AICTE & Affiliated to JNTUH)

Survey No. 179, Chilkur (V), Moinabad (M), Ranga Reddy Dist. TS.

Phone: 8790101015/9959250205

e-mail: principal.giet.u6@gmail.com

JNTUH Code(U6) CIVIL – CSE – MECH – ECE – EEE – MBA – M.Tech. EAMCET Code– GLOB

Department of Civil Engineering

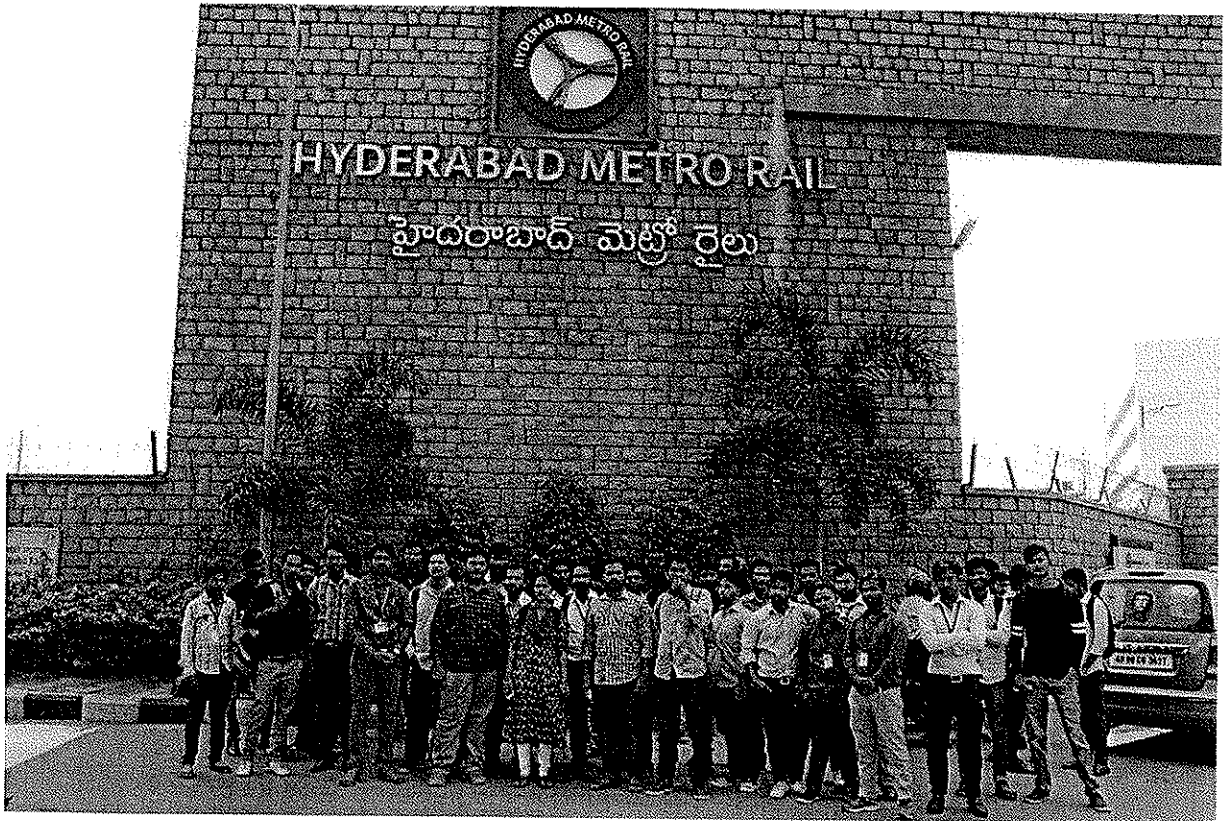
REPORT OF TECHNICAL VISIT

Hyderabad Metro Rail

Inner Ring Rd, Survey Colony, Industrial Development Area, Uppal, Hyderabad, Telangana 500039.

Visit Date: 27/03/2018

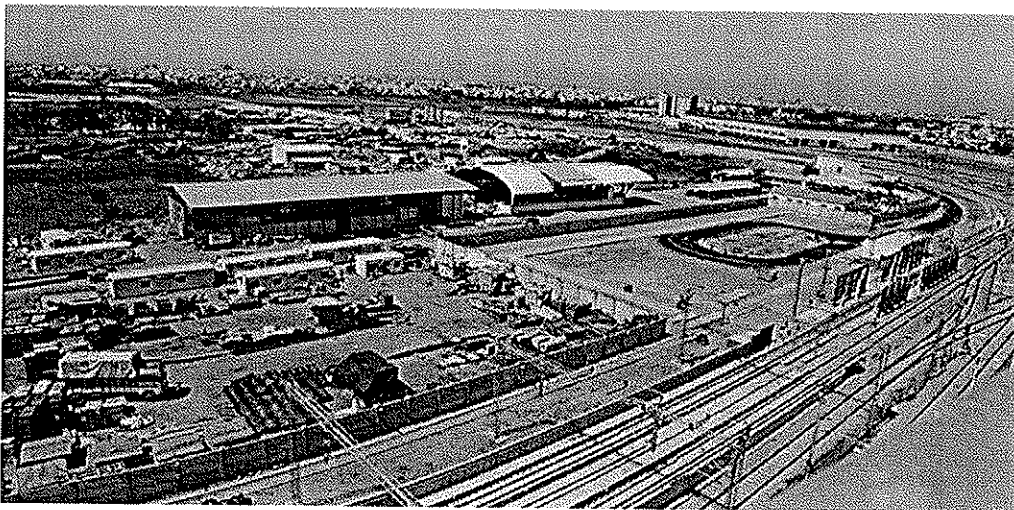
The Hyderabad Metro Rail Project is the World's Largest Public-Private Partnership Project (PPP) in the Metro Sector. The Metro Network will cover a total distance of around 72 Km across three corridors, transporting Hyderabad to the future.



Hyderabad Metro Rail Project is the World's Largest Public-Private Partnership Project (PPP) in the Metro Sector. Metros and MRTS (Mass Rapid Transport System) are emerging as a major area for infrastructure development in major cities with high population (around 8 Million). The Metro Rail Project, once completed will transform Hyderabad as the preferred city in India; with integrated urban transport planning using inter modal connectivity and convenient sky-walks, which will mark the beginning of an era of seamless commuting in India.

The Hyderabad Metro Rail Network will cover a total distance of around 72 Km across three corridors:

- Corridor I : Miyapur to LB Nagar
- Corridor II : JBS to Falaknuma
- Corridor III : Nagole to Shilparamam



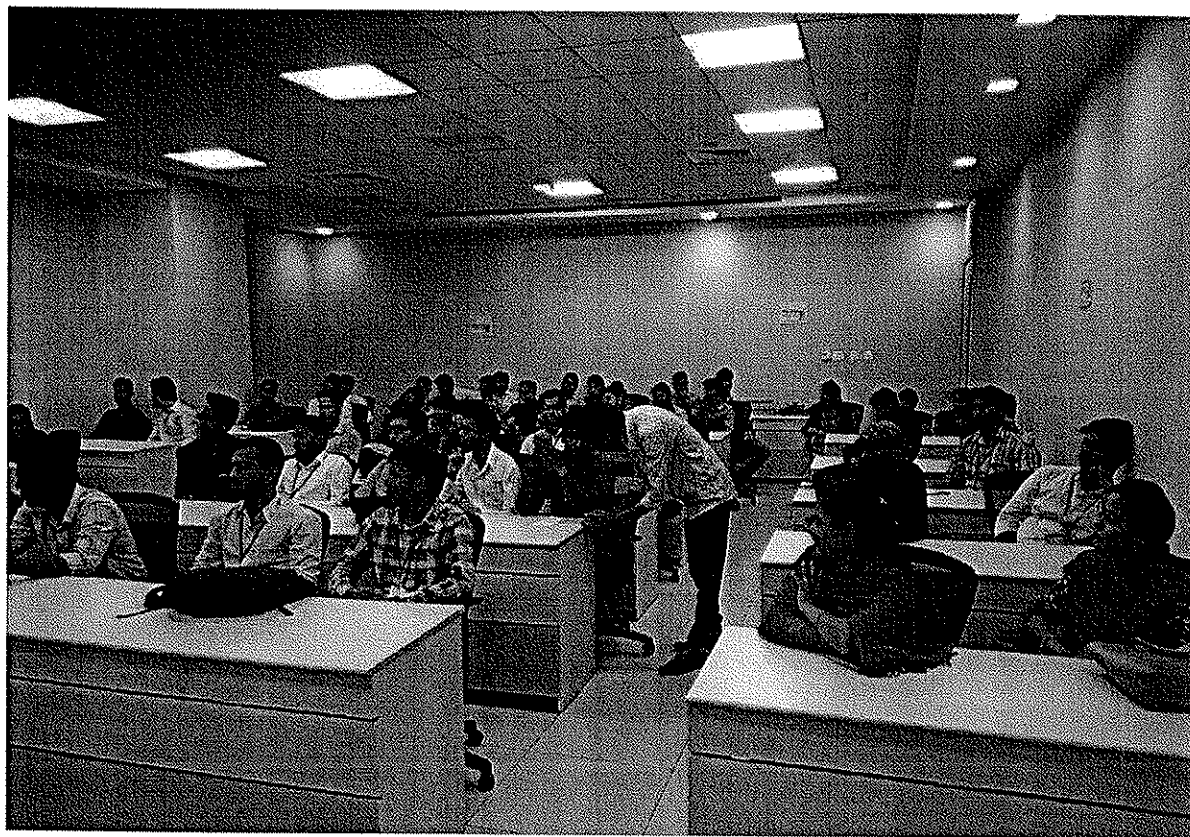
The Project will be integrated with existing railway stations, suburban railway network (MMTS) and bus stations to ensure seamless and comfortable travel.

Hyderabad Metro Rail (HMR) is a 'green' transportation system which will reduce carbon footprint through efficient power consumption, rainwater harvesting and other processes. Every time you ride with us, you contribute to the development of an eco-friendly environment

The three depots planned in 72 km rail network of Hyderabad Metro Rail are located at:

- Miyapur for Corridor 1 (Miyapur –LB Nagar)
- Falaknuma for Corridor 2 (JBS – Falaknuma)
- Uppal for Corridor 3 (Shilparamam – Nagole)

The Uppal depot is the main depot cum workshop where the overhaul and corrective maintenance facilities for whole fleet are planned. The other two depots have basic facilities for scheduled preventive maintenance and minor corrective maintenance.



The maintenance workshops are managed by a team of managers who plan, coordinate and manage various activities in depot to ensure that the trains are well maintained and cleaned for daily passenger service.

Major facilities Explained to the students in the depots are:

- Automatic train wash plant
- Inspection and workshop bays
- Offices
- Depot control center
- Covered & open Stabling lines
- Infrastructure maintenance facilities
- Electrical & Mechanical workshops
- Electronic repair shops
- Open and outdoor storage facilities
- Wheel profiling lathe
- M&P for repair & overhaul
- Training, conference rooms, Cafeteria etc.



Vaishnavi
HEAD
Department of Civil Engg.
Global Institute of Engineering & Technology
Chikur (V), Molnabad(M), R.R. Dist.T.S.-501504.