



# GLOBAL INSTITUTE OF ENGINEERING & TECHNOLOGY

(Approved by AICTE & Affiliated to JNTUH)

Survey No. 179, Chilukur (V), Moinabad (M), Ranga Reddy Dist. TS.

Phone: 8790101015/9959250205

e-mail: [principal.giet.u6@gmail.com](mailto:principal.giet.u6@gmail.com)

JNTUH Code(U6) CIVIL – CSE – MECH – ECE – EEE – MBA – M.Tech. EAMCET Code– GLOB

## Department of Civil Engineering

---

### REPORT OF INDUSTRIAL VISIT

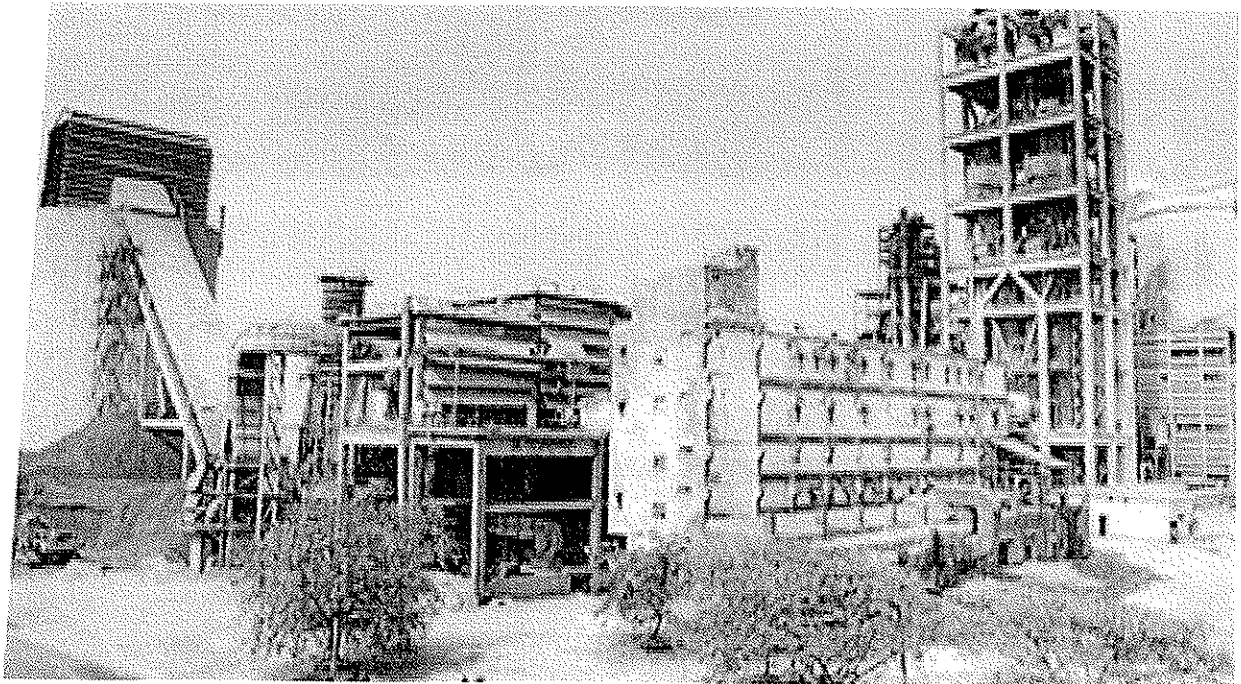
#### Coromandel Cement Factory- Cement Corporation of India Ltd

P.O: CCI TANDUR, Telangana 501158

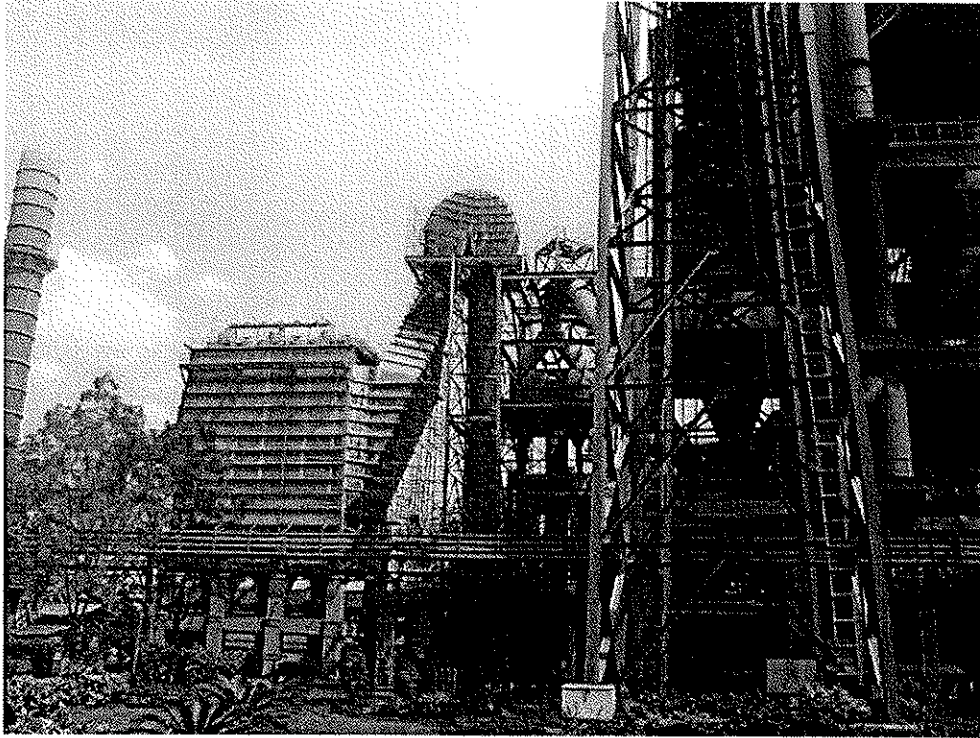
**Visit Date: 27 October 2015**

Students Visited Coromandel Cement factory Tandur, one of India's premier cement makers, in which they learned the process of cement formation and also discussed the marketing Finance and HR related aspects of the company. It took almost 3 hours to visit the industry which was followed by questions of students. Students got a chance to transfer their theoretical knowledge to practical implication.

Mr. Sandeep HR head and Mr. Pramod gave us deep insight about the technical and non technical aspects. The hospitality given by the factory staff was tremendous and overwhelming.

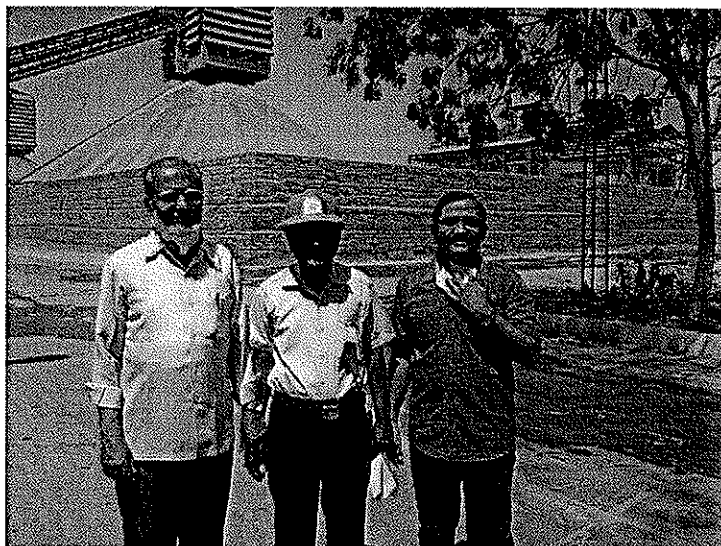


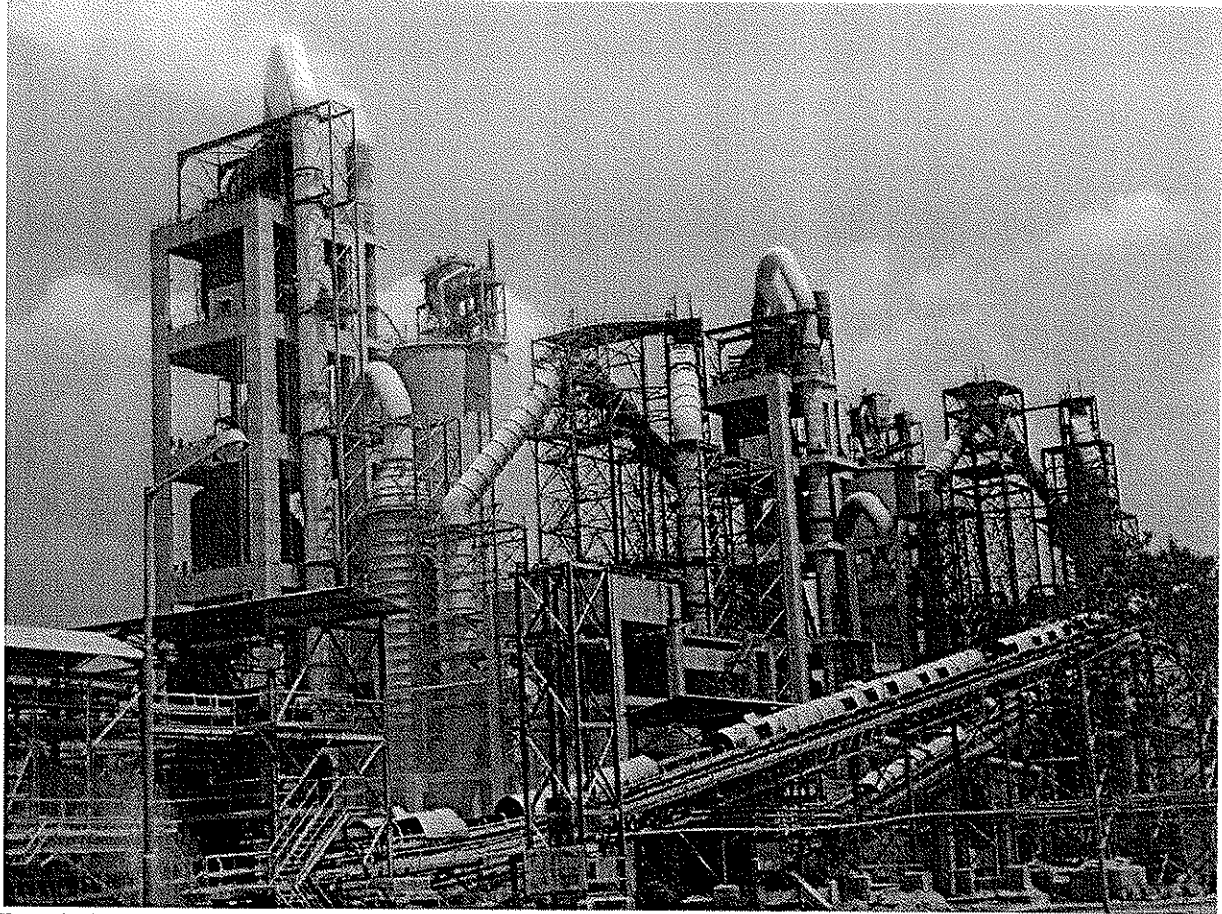
**Cement Manufacturing Plant- Tandur**



### **Manufacturing of cement-process description along with Mechanical equipments:**

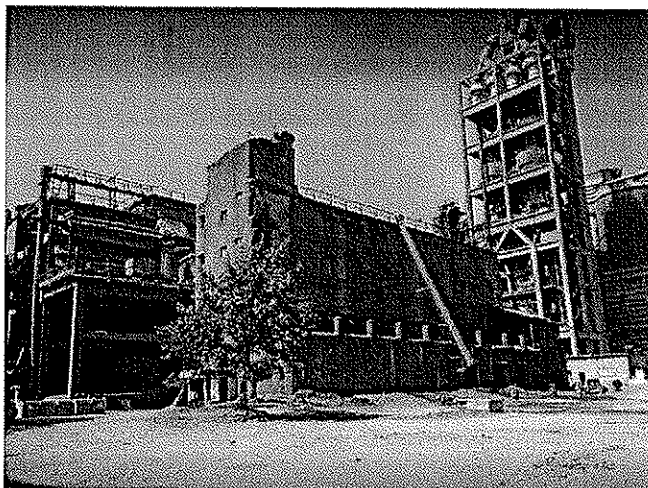
**Lime Stone Crusher:** The crusher is meant for crushing the limestone from one meter size to less than 10mm. Crushing process consists of primary crusher followed by secondary crusher. Primary crusher, secondary crusher consists of vibrating screens .They act as sieves. Primary crusher crushes the limestone from one meter size to 70mm. Secondary crusher is meant for further crushing of lime stone from 70mm to less than 10mm. room, feeding hoppers, feeding equipment, conveyors ,galleries, plat forms, hand railing, deducting equipment, foundation etc





**Raw Mill & Ball meal preparation:**

Raw mill is a ball mill meant for grinding the limestone, laterite and iron ore of size below 10mm to less than 212 micron size this powdered material is called “raw meal” and is transported to storage silo. The raw material preparation process is consisting of feed hoppers, conveyers, support for conveyers, control room, bucket elevators, fine particle separation equipment, platforms, separators etc.





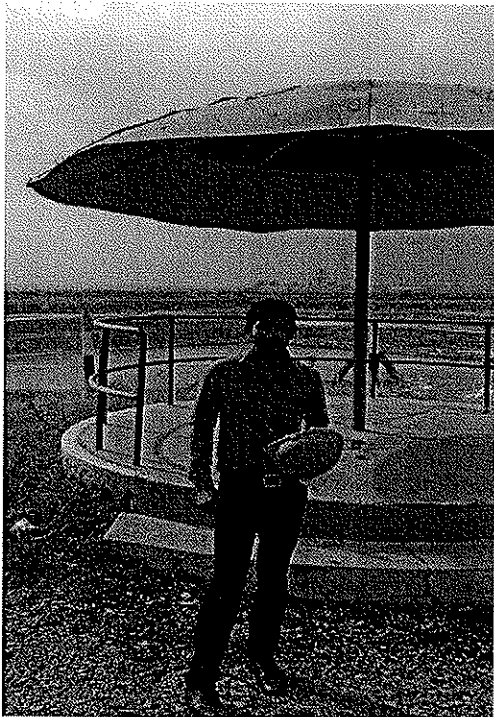
**Blending silo & kiln feed extraction system:**

Storage silo is of concrete construction meant for storage of the raw meal powder produced by raw mill and also facilitate blending through aeration system to homogenize and maintain consistent quality of raw meal. Homogenized raw mill from the silo transported to kiln feed bin. From kiln feed bin the raw mill conveyed to the top of pre heater through belt conveyor.





**Rotary kiln:** Kiln is a long, steel tubular structure with refractory lining and is placed on support rollers to rotate at required speed. The hot material is heated in pre heater up to 900 degrees enters in to kiln inlet. The kiln will be in rotating condition with controlled speed and with pumping of fine coal and air from outlet of kiln. The entered hot material is converted at 1350-1400 degrees to clinker after passing through various phases





After completing the visit, Students had an exposure to various phases that cement undergoes before manufacturing. Students were explained about

1. **Manufacturing process**
2. **Batching**
3. **Packing of cement**
4. **Quality testing of cement**
5. **Air quality measurement in the plant**

Students found this method very useful and they were able to gather a lot of information about the cement manufacturing Process.

  
**HEAD**  
 Department of Civil Engg.  
 Global Institute of Engineering & Technology  
 Chilkur (V), Moinebad(M), R.R., Dist.L.S.-501504.